

## HET BOUWEN VAN EEN EENGEZINSWONING

bouwheer:

N.V. SF Construct  
Industrieterrein 1/25A  
3290 Diest



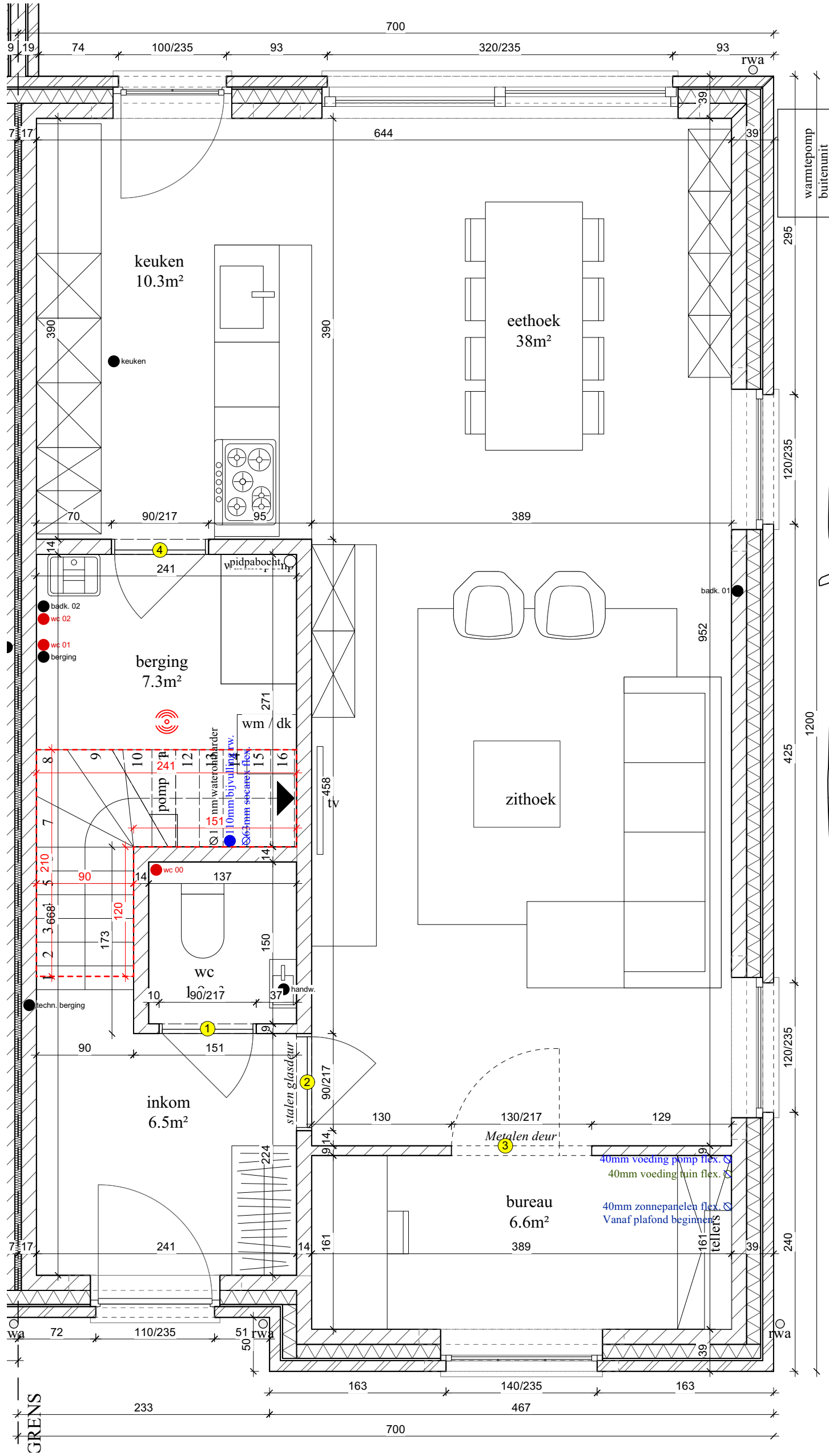
STYLISH  
FAMILY HOMES

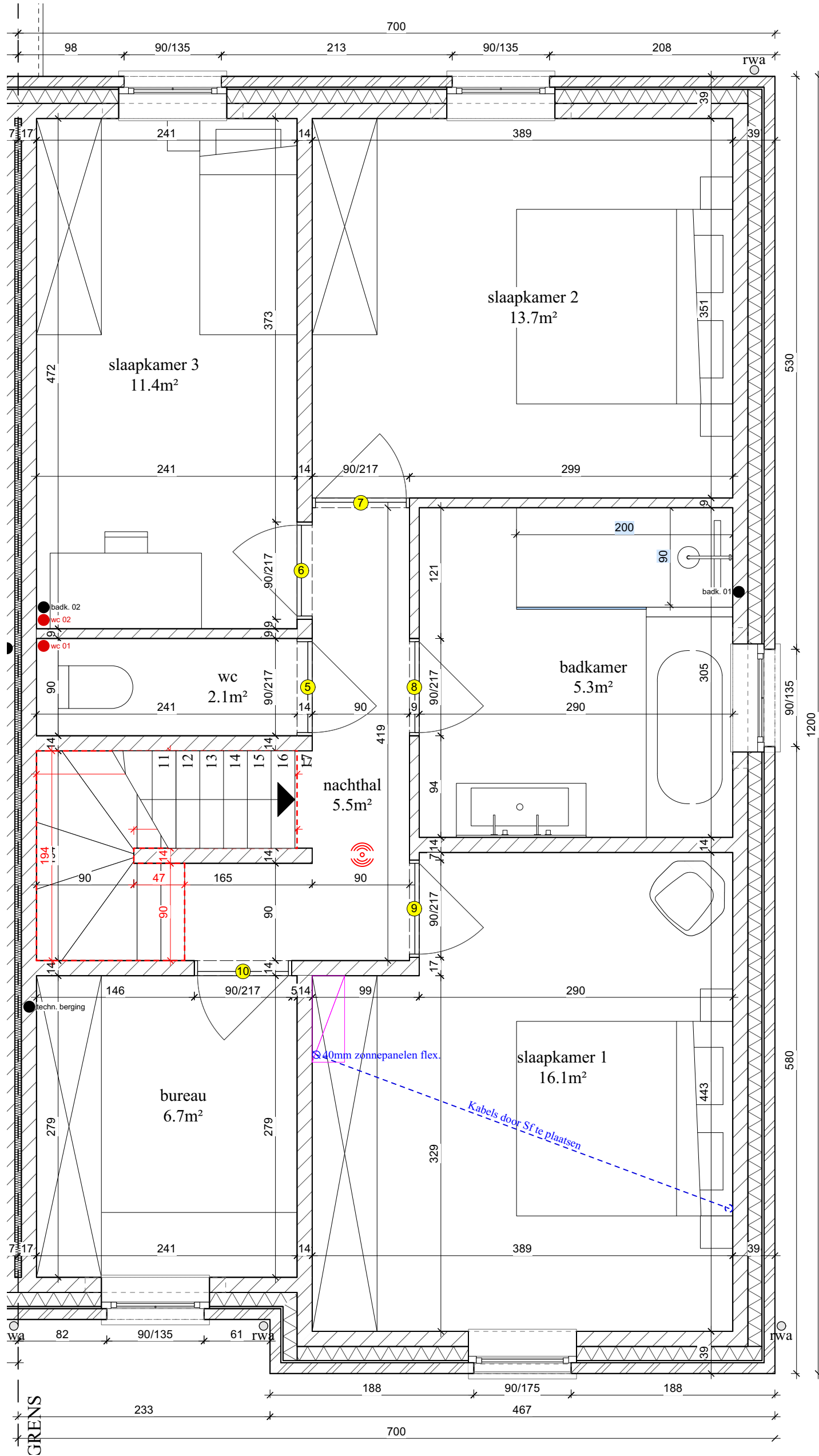
perceel:

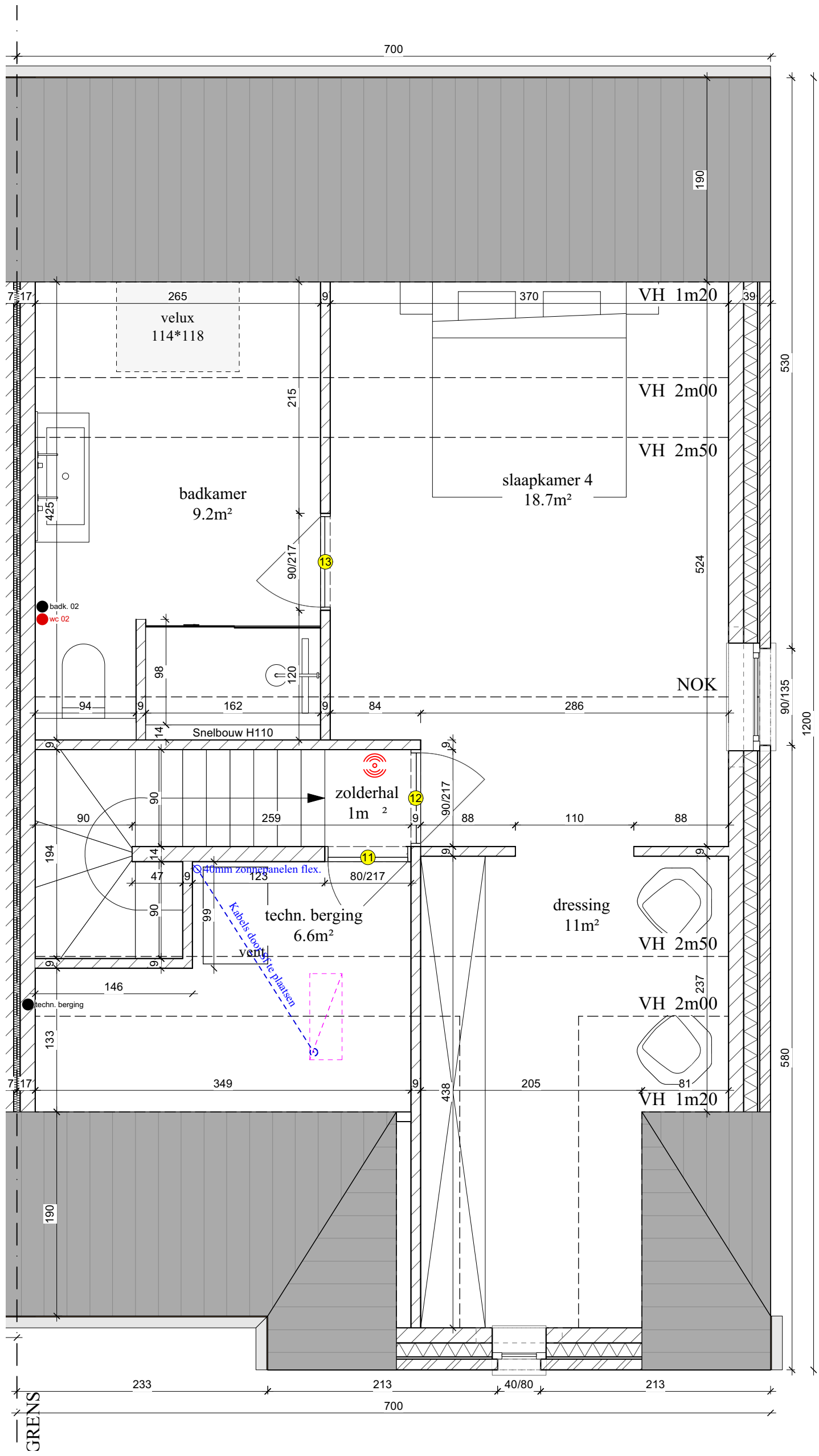
13-05-2025

STEENBEEKHOF 13 (Lot 7) - STERREBEEK 1933

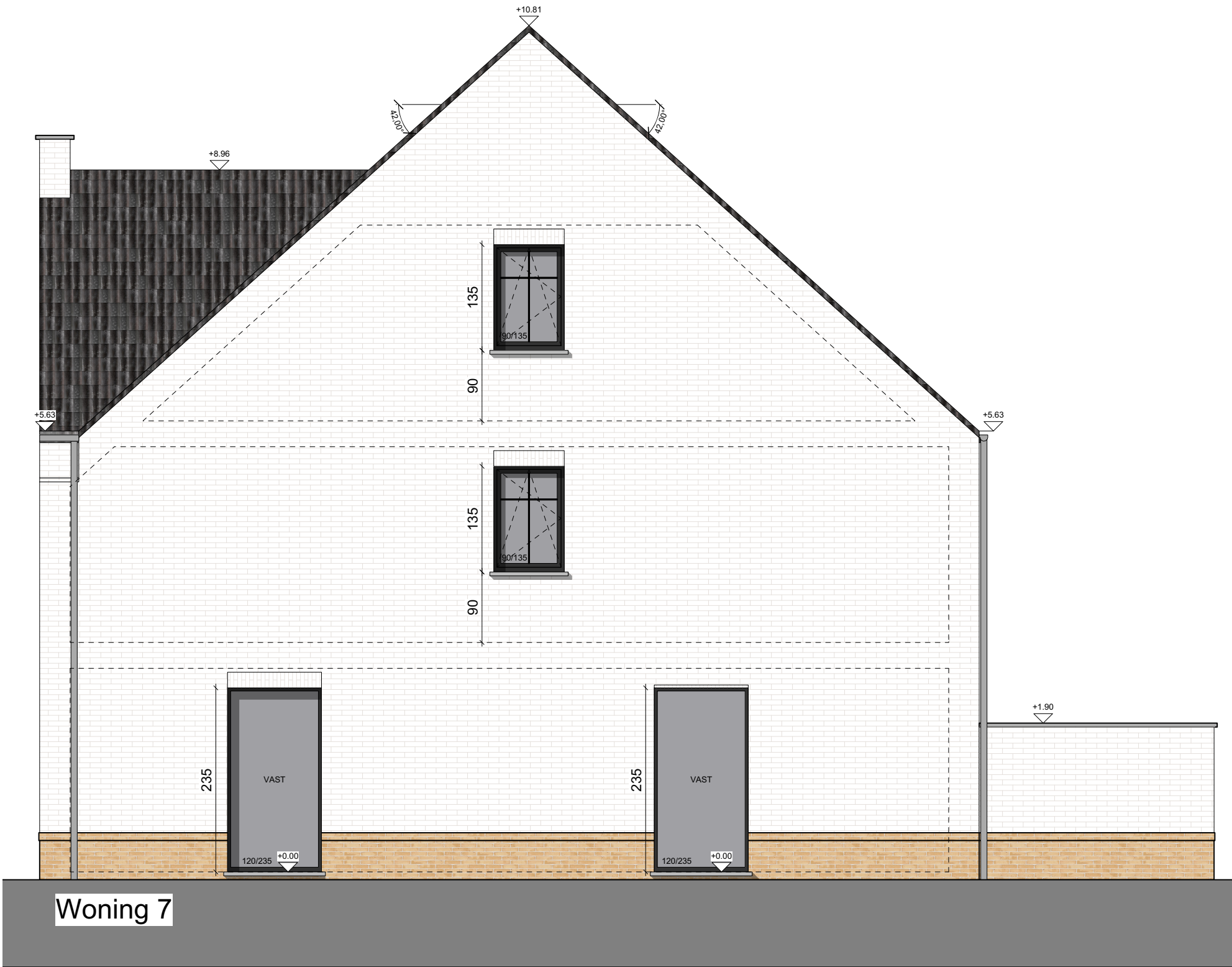
Inhoud:











Woning 7

Perceelsgrens

+10.81

+5.63



Woning 7



STYLISH  
FAMILY HOMES

STEENBEEKHOF 13 (Lot 7) - STERREBEEK 1933

Achtergevel

datum 13-05-2025  
schaal 1/50